

## Context

- Modelling in Digital Humanities (critical/practical)
- Modelling in other disciplines
- Research and learning strategies (learning by doing)

## Argument

- Modelling as creative process of thinking/reasoning
- Make and manipulate meaning through external representations



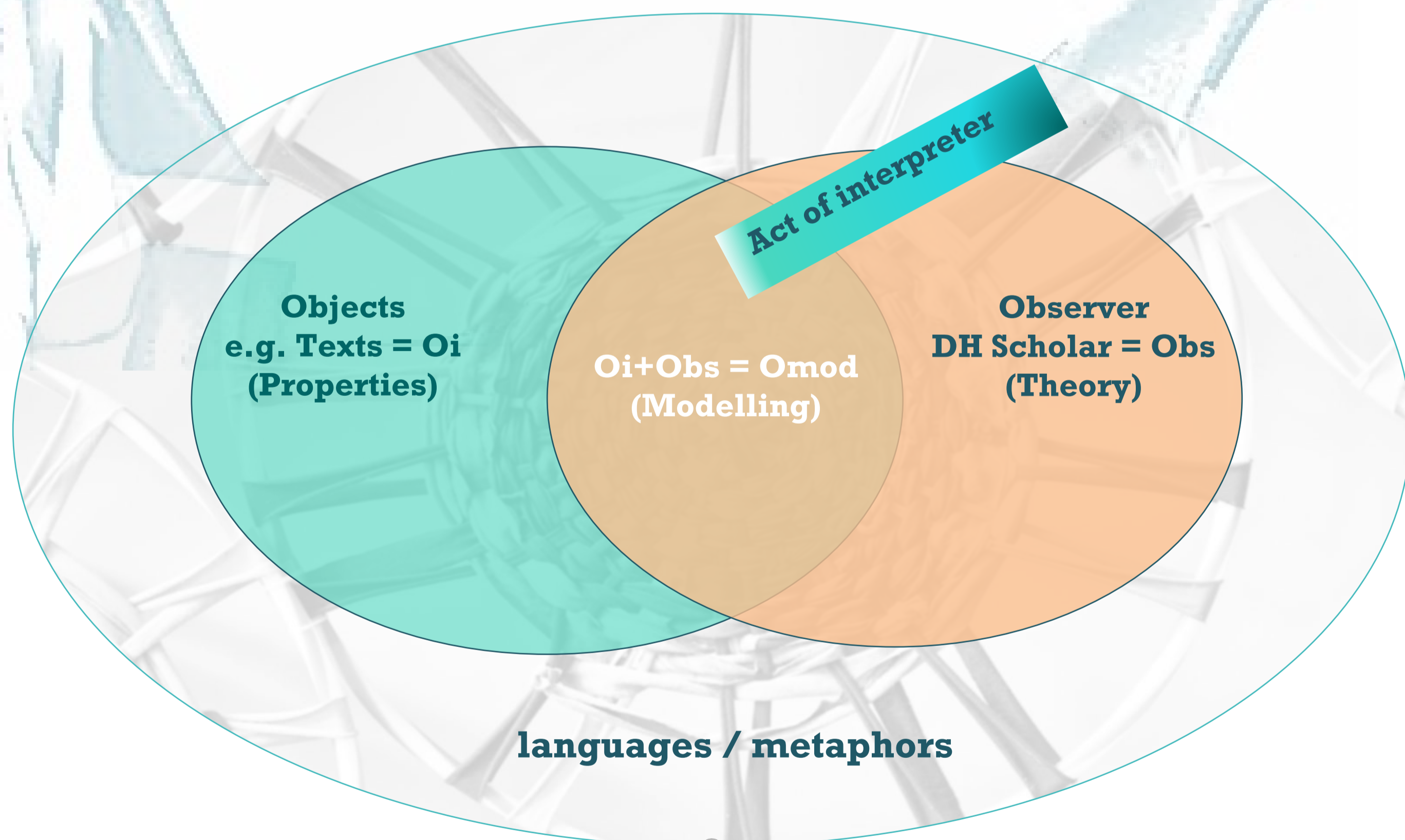
- Modelling as research strategy



## Hypothesis

Pragmatic metaphorical model

- Non dualistic perspective (de-dychotomisation)
- Act of interpretation (*translatio*)
- Context sensitive (non-positivistic, language in use)
- Metaphorical (creative, relational, dynamic)



Modelling as a process of signification

- Model of modelling to grasp relational aspects
- Role of models in society

### Project team

Arianna Ciula, University of Roehampton (UK)  
 Øyvind Eide, University of Passau/University of Cologne (DE)  
 Cristina Marras, CNR-ILIESI, Rome (IT)  
 Patrick Sahle, University of Cologne (DE)  
 Research Assistants: Nils Geißler (DE), Michela Tardella (IT)

Project No.: n. A115838

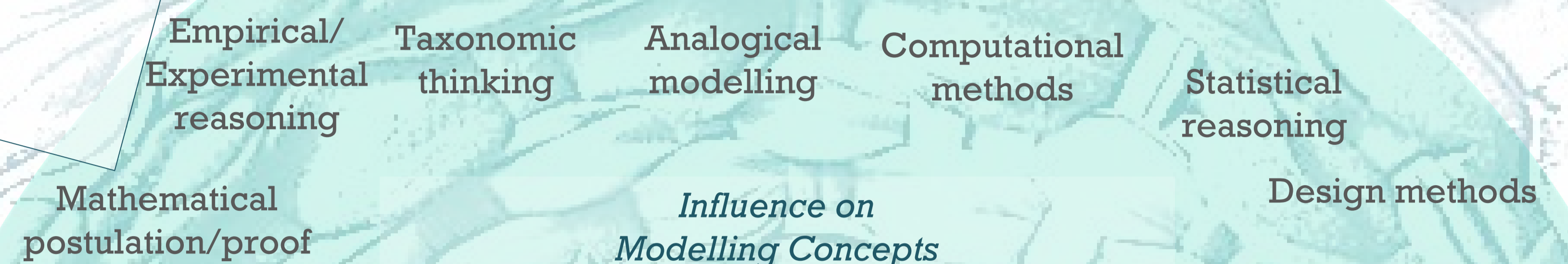
Duration: April 2016 – October 2017

Website: <http://modellingdh.eu>

### References

*Auto-archaeology and contextual data. Site and Subjective Writing* 09. <http://orgcult.wikidot.com/ssw-session-09>  
 Boeuf, P. Le, Doerr, M., Ore, C. E. and Stead, S. (2015). Definition of the CIDOC Conceptual Reference Model. Version 6.2.  
 Broux, Y. *Three-mode networks for Elephantine letters. Six degrees of spaghetti monsters*, 2015-04-09. <http://spaghetti-os.blogspot.no/>  
 Ciula, A., Ø. Eide, submitted. Modelling in Digital Humanities: Signs in Context. *Digital Scholarship in the Humanities*.  
 Ciula, A., C. Marras, in press. Circling around texts and language: towards 'pragmatic modelling', *Digital Humanities Quarterly*.  
 Flanders, J. and Jannidis, F. (2015). Knowledge Organization and Data Modeling in the Humanities. White paper.  
 Frigg, R. and Hartmann, S. (2012). Models in science (Ed.) Zalta, E. N. The Stanford Encyclopedia of Philosophy. Stanford University  
 Godfrey-Smith, P. (2009). Models and fictions in science. *Philosophical Studies*, 143(1): 101–16.  
 Kralemann, B. and Lattmann, C. (2013). Models as icons: modeling models in the semiotic framework of Peirce's theory of signs. *Synthese*, 190(16): 3397–420.  
 Mahr, B. (2009). Information science and the logic of models. *Software & Systems Modeling*, 8(3): 365–83.  
 McCarty, W. (2005). *Humanities Computing*. Basingstoke [England]; New York: Palgrave Macmillan.  
 McCarty, W. (2009). Being reborn: the humanities, computing and styles of scientific reasoning. In Bowen, W. R. and Siemens, R. G. (eds), *New Technologies in Medieval and Renaissance Studies*, vol. 1. Tempe, Arizona: Iter and the ACMRS, pp. 1–23.  
 Morgan, M. S. (2012). *The World in the Model: How Economists Work and Think*. Cambridge University Press.  
 Sahle, P. (2013). *Digitale Editionsformen - Teil 3: Textbegriffe und Recodierung: Zum Umgang mit der Überlieferung unter den Bedingungen des Medienwandels*. Norderstedt.

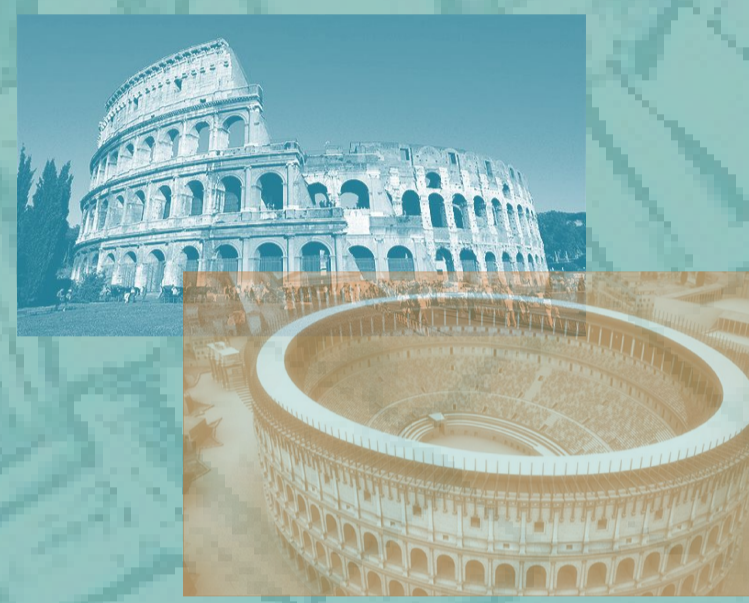
## Modelling in DH



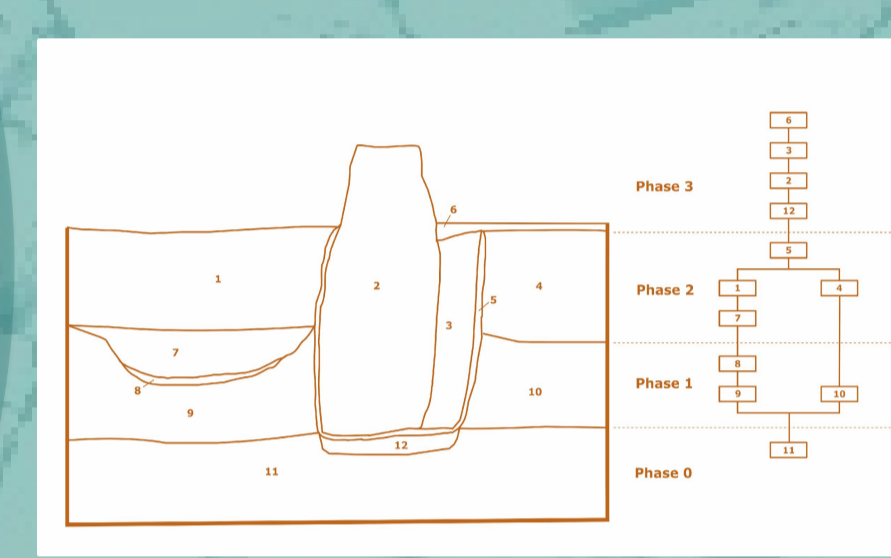
## Digital Humanities

Semiotic Types

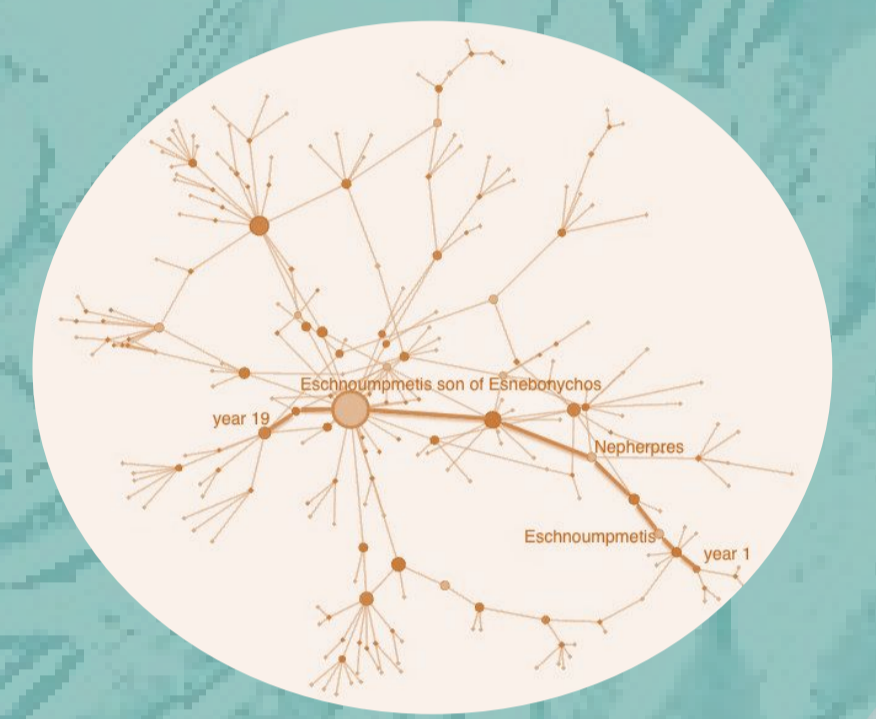
Image-like models



Structural models



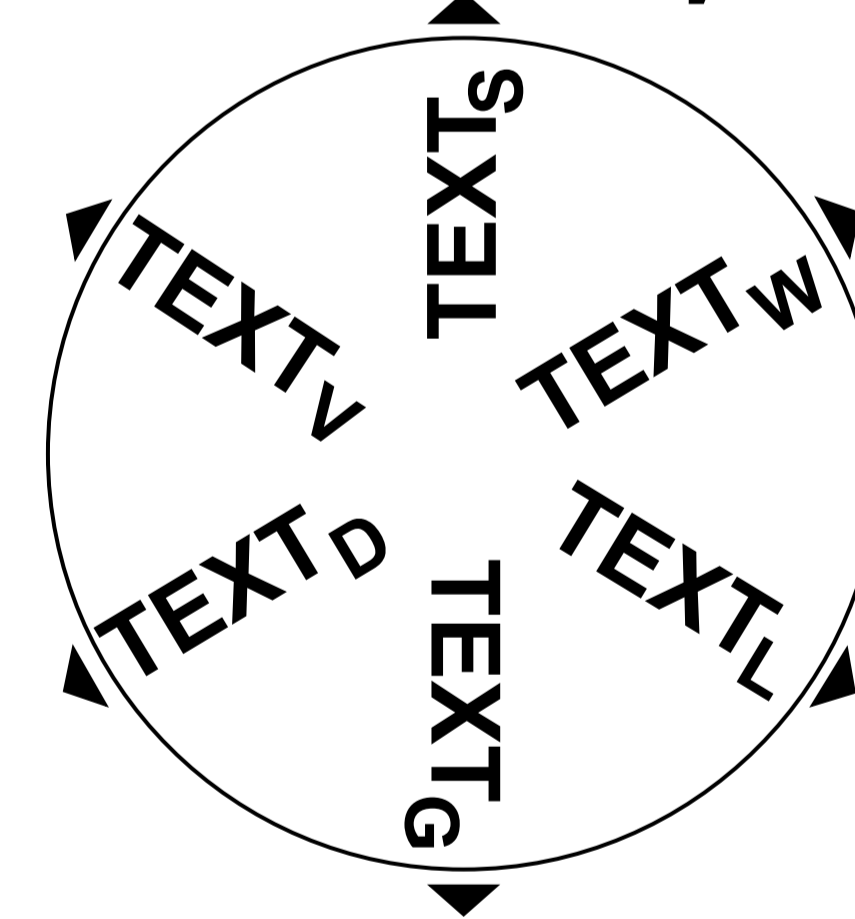
Metaphorical models



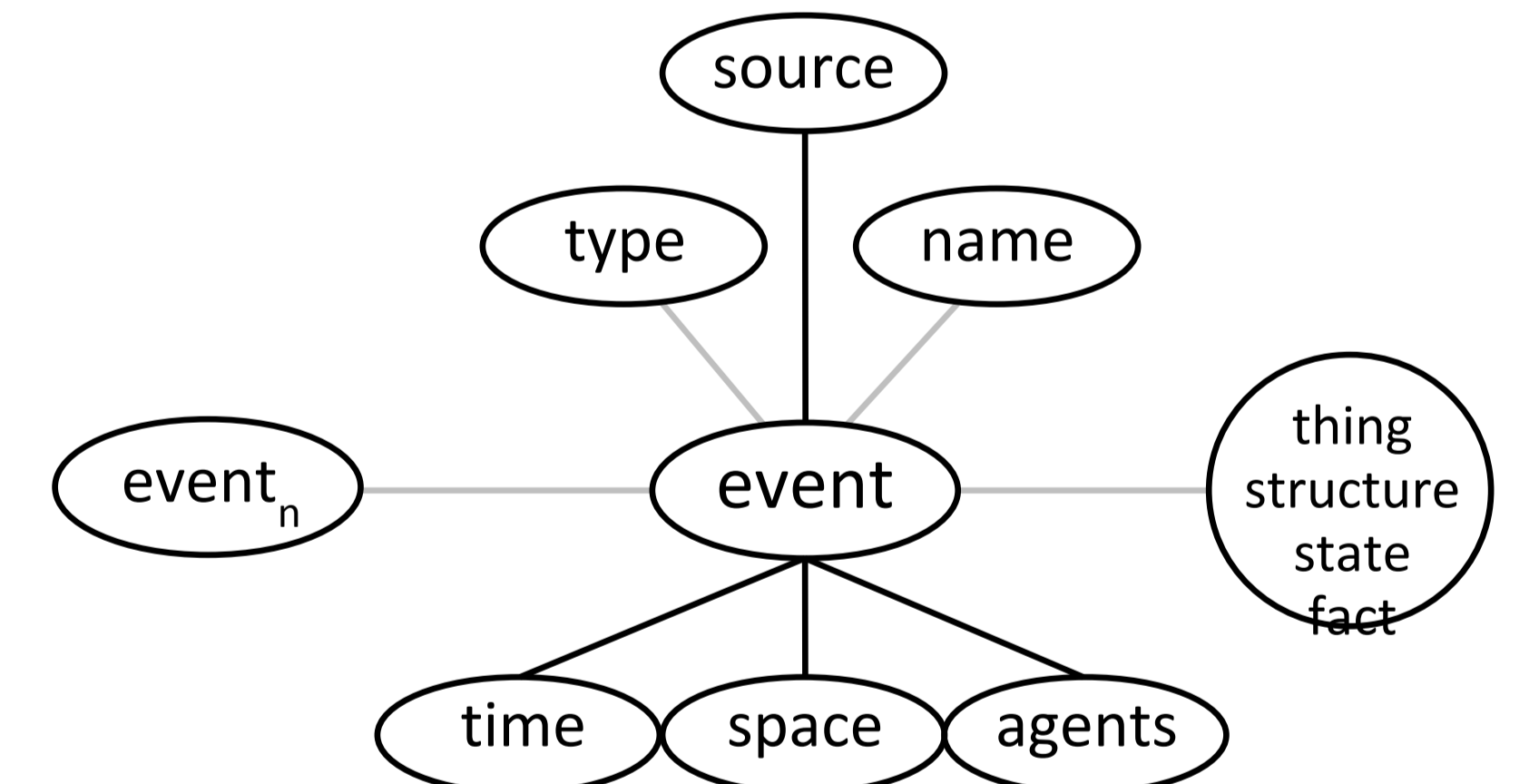
## Interdisciplinary workshop

## Case studies

Modelling of Textuality



Modelling of Events



## Modelling the relation of text and event

